



Department of
BIOMEDICAL ENGINEERING

JOHN AND MARCIA PRICE COLLEGE OF ENGINEERING
THE UNIVERSITY OF UTAH

A Message from the Chair



The unusually hot, dry 2024 summer semester at Utah is drawing to a close. Fall semester routines are already picking up – athletes are on campus and the Ute marching band is practicing daily quite audibly on the intramural field. Our BME summer newsletter has collected a rich variety of BME stories and news that I think you'll enjoy. We've featured a BME undergrad alum working in biotechnology at Genentech in California, junior faculty Tamara Bidone's Kavli Fellow accolades from the National Academy of Science, BME faculty Rick Rabbitt co-authoring a visionary national document on the Grand Challenges in Biomedical Engineering, several recent, featured BME research articles and prominent conference presentations, BME's Jeff Weiss's new NIH grant with his HCI collaborator focusing on lung cancer mechanics, Robby Bowles' new collaborative NIH grant studying a completely new transcription factor implicated in improving cartilage regeneration, brand new entering BME faculty Karli

Gillette, and a profile of our new Dean, Price College of Engineering, among much more.

I truly enjoy watching our outstanding BME students excel both in our program and with their degrees in their future endeavors, and our faculty making headlines and progress in bringing biomedical technology to impact lives. Read on!

David W. Grainger, Ph.D.
University Distinguished Professor
Chair, Department of Biomedical Engineering
Department of Molecular Pharmaceutics
Ole and Marty Jensen Endowed Chair
University of Utah



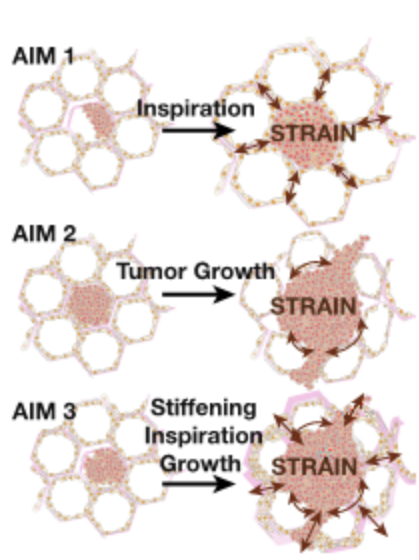
**An Interview with
BME Alum and
Genentech
Technical
Development
Scientist, Sage
Jensen**

[Read more here](#)



National Academy of Sciences names BME Faculty Tamara Bidone a 2024 Kavli Fellow

[Read more here](#)



Mendoza, Weiss receive \$2.6 million grant to study biomechanics of lung tumors

The interdisciplinary team of lung cancer researcher Dr.

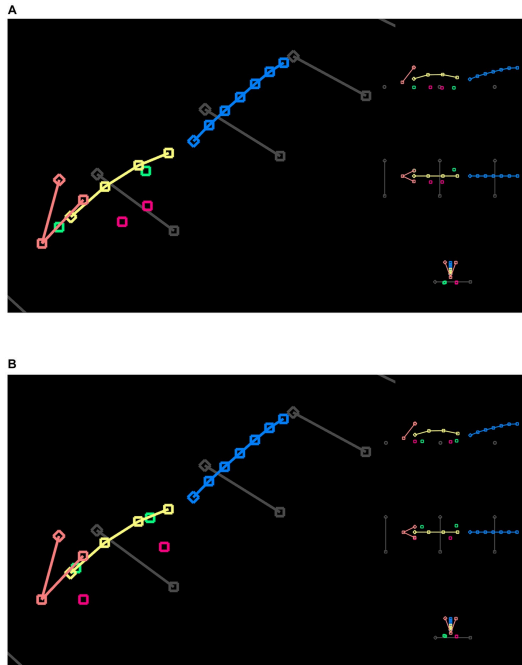
Mendoza and

BME's Dr. Weiss receive multimillion-dollar grant to study the

origin of malignant tumors in the lungs.

the lungs.

[Read more here.](#)



BME Grad Student, Joseph Southern, and BME Alum, Colin Katz, featured in *Frontiers in Neurology*

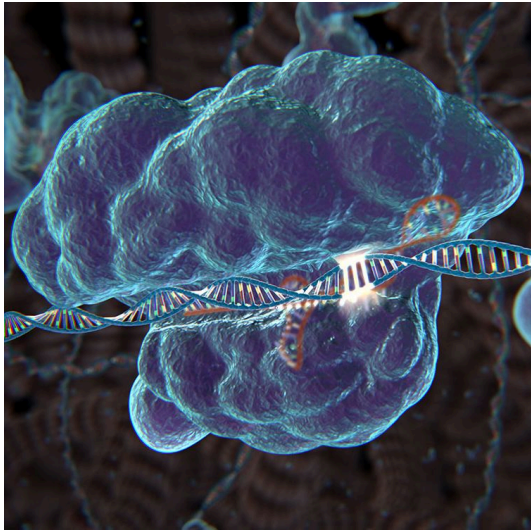
**An integrated workflow for 2D
and 3D posture analysis during
vestibular system testing in
mice**

[Read the article here](#)



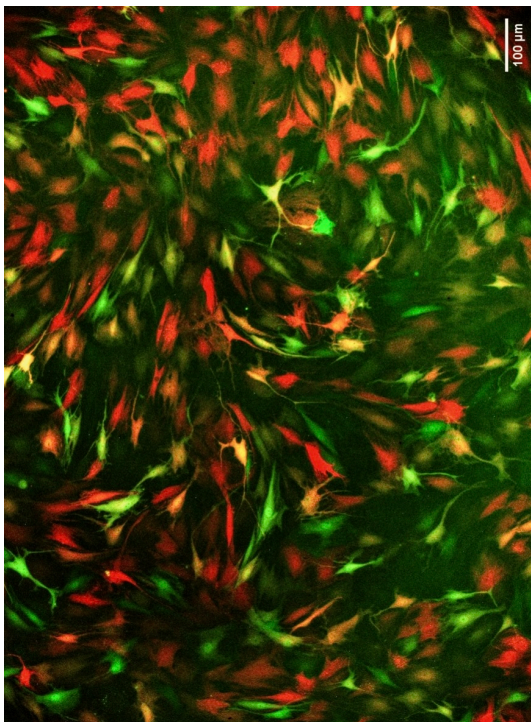
Cardiovascular expert and new BME faculty, Karli Gillette, gives new pulse to department with her shared SCI appointment

[Read more here](#)



BME faculty, Rick Rabbitt, and BME adjunct faculty, Chris Johnson, co-author national visionary statement on BME's future "Grand Challenges"

[Read more here](#)



BME faculty Robert Bowles awarded NIH Grant with collaborative research team at Utah and UPenn.

[Read more here](#)



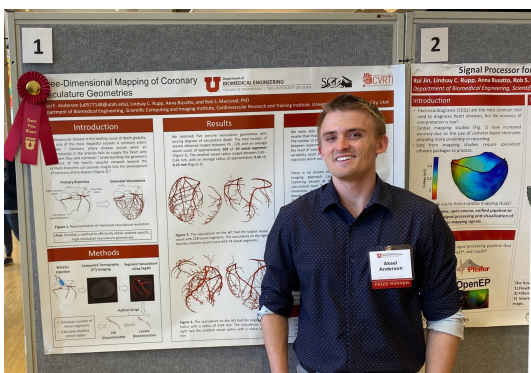
BME hosts annual Graduate Student Visitation Weekend

[Read more here](#)



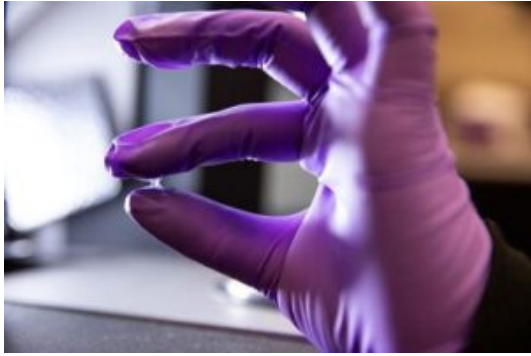
2024 John and Marcia Price College of Engineering Convocation honors BME students

[Read more here](#)



UU BME well-represented at the Annual Campus Undergraduate Research Symposium

[Read more here](#)



**BME faculty,
Jessica Kramer,
presents research
on tumor formation
with artificial
mucus at American
Chemical Society
meeting**

[Read more here](#)



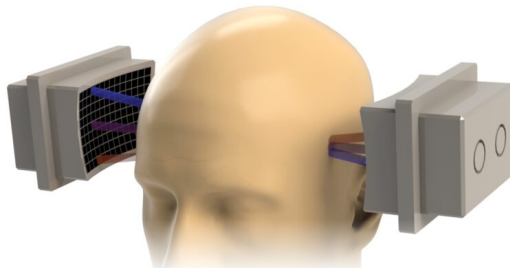
**University of Utah
and BME figure
prominently in the
Utah 14th Annual
Bench to Bedside
(B2B) Competition**

[Read more here](#)



**BME introduces
Regulatory Affairs
Certificates for
Graduate and
Undergraduate
Students**

[Read more here](#)



BME's Kubanek Lab featured on cover of IEEE Transactions on Biomedical Engineering publication.

[Read more here](#)



Charles Musgrave named new Dean of John and Marcia Price College of Engineering

[Read more here](#)



University of Utah represented in the 2024 Summer Olympic Games

[Read more here](#)

EXPLORE UofU BME

Give to Utah BME



Copyright © 2023 University of Utah, Department of Biomedical Engineering, All rights reserved.
You are receiving this email because you opted in via our website.

Our mailing address is:
University of Utah, Department of Biomedical Engineering
36 S Wasatch Dr
SMBB 3100
Salt Lake City, UT 84112-5001

Want to change how you receive these emails?
You can [update your preferences](#) or [unsubscribe from this list](#).