



15th
 Largest BME
 Department Nationally



Welcome!

We are excited that you are considering the University of Utah for your graduate school experience. This information packet, prepared by current BME graduate students, will help you learn more about our program, the lives of our current student, and life in Salt Lake City!



7
 Graduate Tracks



17th
 In BME Research
 Expenditures



Life in Utah



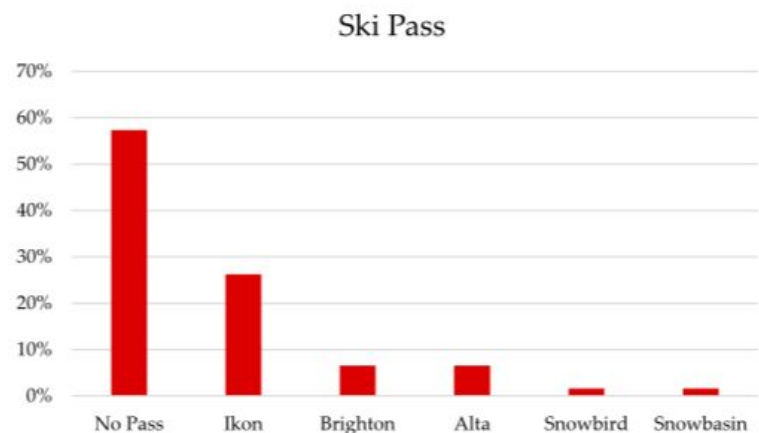
“I came for the access to the mountains and stayed for the atmosphere and peers.”



A Place For You

Welcome to our vibrant community, boasting over 10 unique neighborhoods easily explored with complimentary bus and TRAX (Light Rail) services using your student ID. Just a 45-minute drive away, enjoy the luxury of famous ski resorts such as Park City, Brighton, Alta, and Snowbird. Immerse yourself outdoors with numerous hiking trails within walking distance of several neighborhoods and campus. Salt Lake City is a gateway to adventure, surrounded by **5 national parks, 45 state parks, 5 national history museums, 14 national monuments, 26 natural areas, and 15 ski resorts.** Indulge in the seamless blend of convenience, exploration, and timeless beauty that defines our community.

Welcome to Salt Lake City!



“UofU is a great school with exciting research opportunities. Besides, Salt Lake City is a great place to live in.”



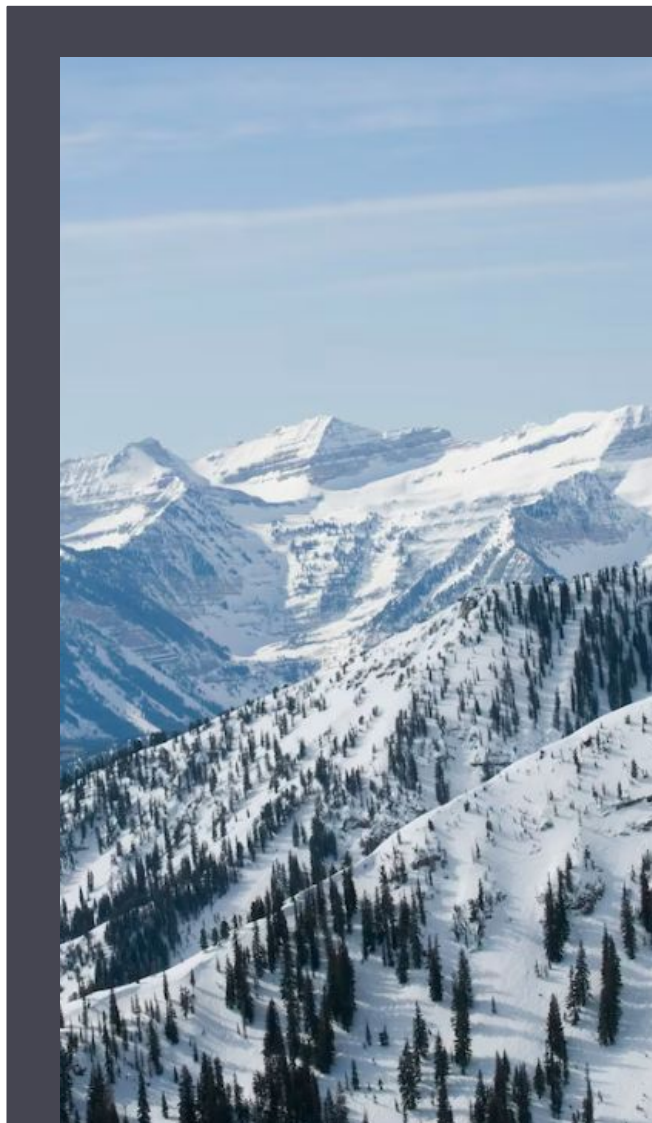
“I chose Utah because it had the best combination of research I'm interested in and activities to do outside of lab, plus the work-life balance to actually be able to enjoy those things.”

Favorite Student Activities

- Downhill Skiing
- Snowboarding
- Concerts & Music
- Visiting Museums
- Hiking/camping
- Reading
- Snowshoeing
- Mountain Biking
- Rock Climbing
- Trivia Nights
- Traveling
- Sports
- Pottery Class
- Trail Running
- Cross Country Skiing



**List of School & Local
Based Organizations and
Events**



Housing in Salt Lake City

Avenues

Charming, Historic Homes
Small Local Business
Hiking & Biking Trails
Close to University
Great Views of the City

9th & 9th

Local Shops
Cafes & Restaurants
Walkability
Food, Coffee, Entertainment

University

Residential Area
Student Housing
Close to Work & School
Great Public Transportation

Harvard & Yale

Beautiful Homes
Centrally Located
Easy Commute to Campus
Cafes and Restaurants

Foothill

Neighborhood Feel
Close to Red Butte Garden
Near Emigration Canyon
Closer to Skiing Canyons
Easy Freeway Access

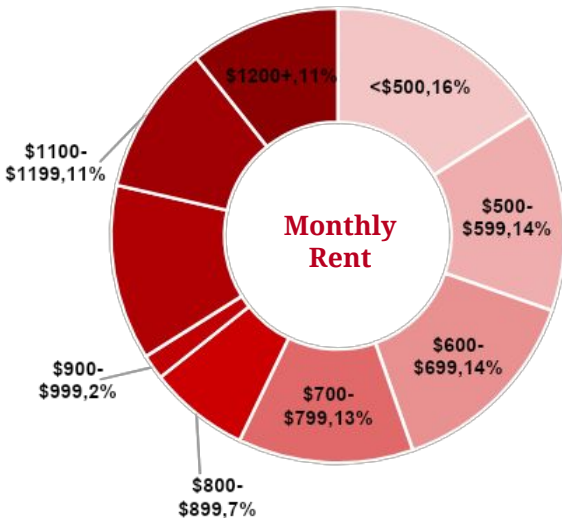
Downtown

Metropolitan
Restaurants & Nightlife
Pioneer Park
Sports and Events
Centers
City Life Atmosphere

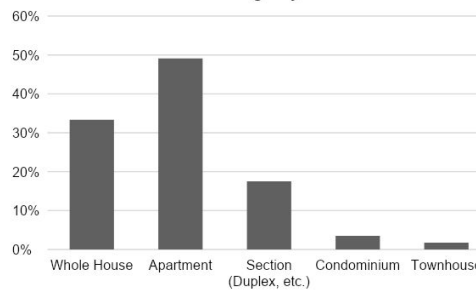
Sugarhouse

Safe Neighborhood
Shopping Centers
Sugarhouse & Fairmont Parks
"Mini Downtown"
Great Restaurants

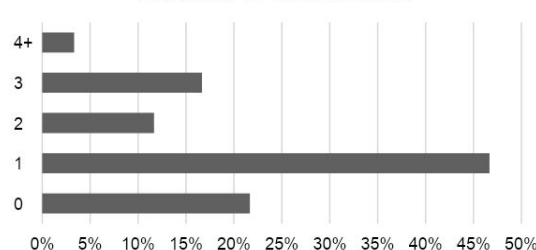
Utilities are sometimes included in rent. Student who pay for separately pay on average \$30-\$200.



Housing Style



Number of Roommates

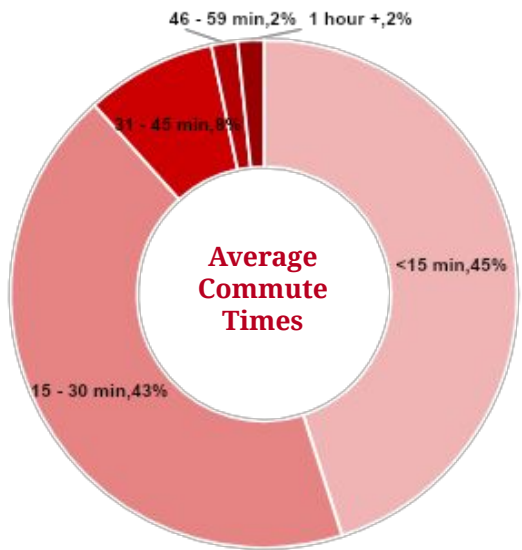


Methods of Finding Housing

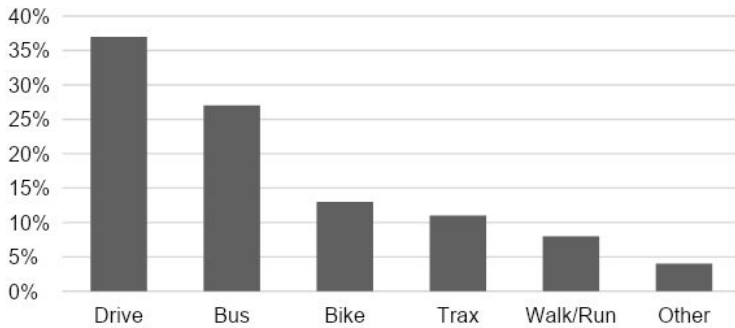
- KSL
- Rentler
- Trulia
- Facebook
- Word of Mouth
- Driving Around
- Zillow
- Through a Realtor

*All Data collected from 60 current students (2022-2023)

Commuting to the U



Commuter Method

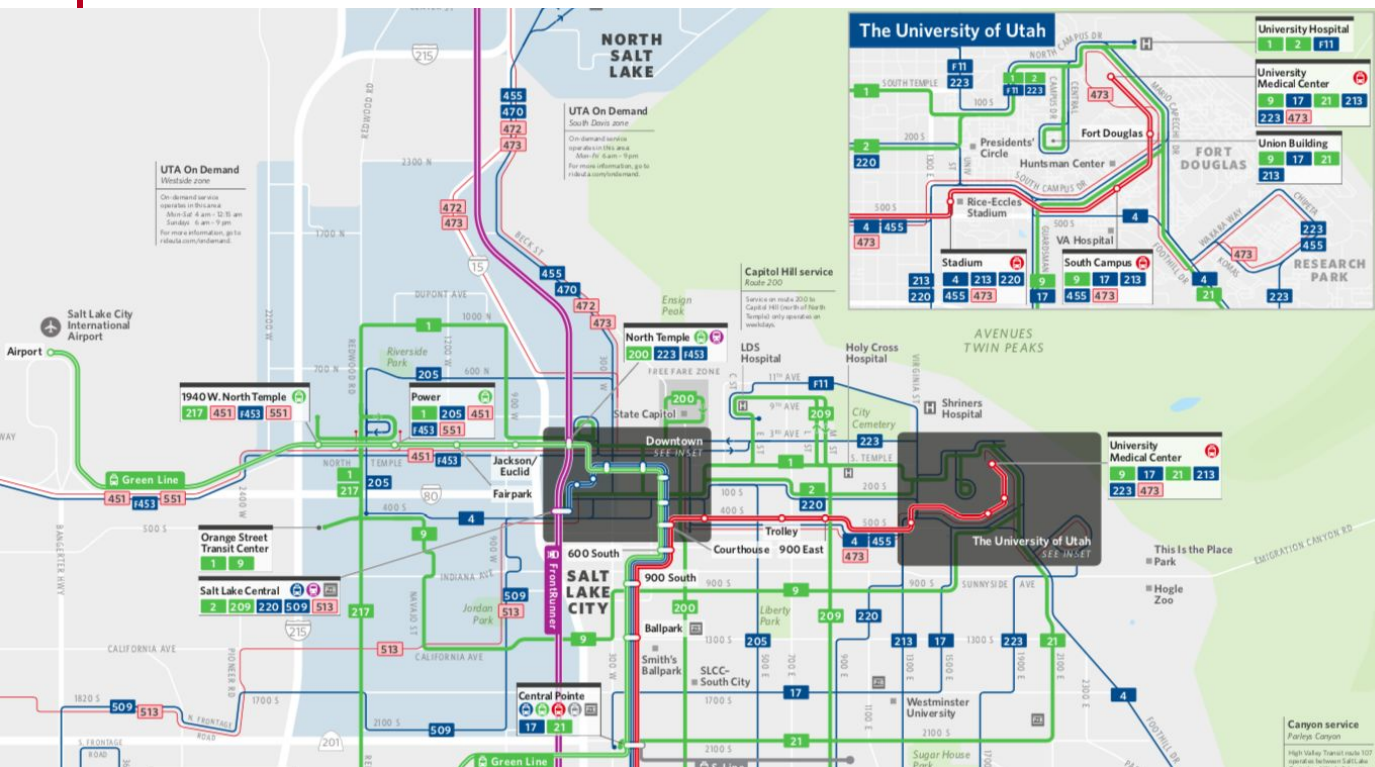


[University of Utah Parking Services Map](#)



[UTA Schedules and Maps](#)

[Current Student Housing](#)



UTA & TRAX

UTA Bus & TRAX are free for all University of Utah students and employees!

*Online version of this map can be found here:



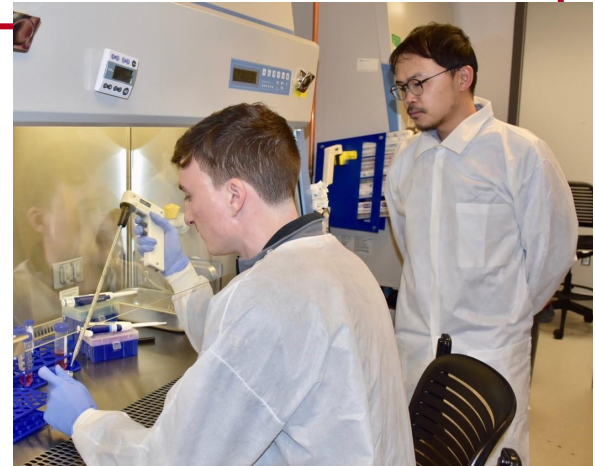
Housing Advice From Students

- Find a place close to a bus/TRAX stop that goes directly to the U — this lowers gas/parking expenses, helps our inversion, and provides an easy way to get to work on snowy days.
- Consider bus or TRAX stops that do NOT require switching multiple times when commuting to campus. Use a *direct/single-stop* commute.
- Being close to campus makes staying late at work and going in on the weekends much easier.
- KSL classifieds, Rentler, Trulia, and word of mouth are the best way to find good places to live.
- Places come up for rent usually about 1-2 months before landlords want to start the lease. Looking early may not always be preferable.
- Landlords accept lots of applications for each apartment; ask how many active applicants there are before paying an application fee.
- Some low rents reported are passed down from previous students or other special circumstances. Expect to pay closer to market value, especially during your first year.
- If you are attempting to get into the student family apartments (married or in a civil partnership), get on the waitlist as soon as you can.



Why We Chose Utah BME

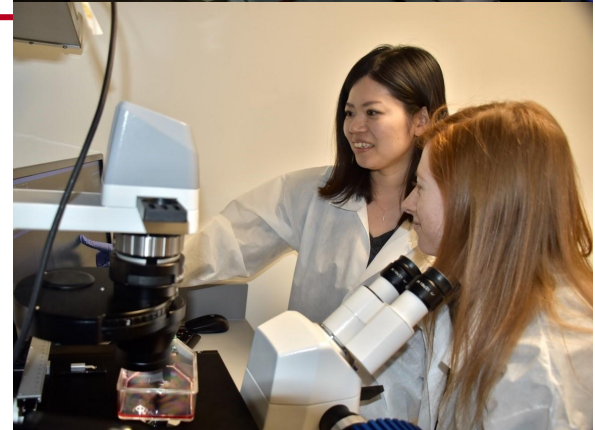
“I did undergrad here and fell in love with Salt Lake and couldn’t imagine leaving for any other programs that I interviewed at — they just weren’t lucrative enough to draw me away.”



“UoU BME grad students have a better sense of community and work-life balance. It is clear that we support each other in academic and personal success.”



“The entrepreneurship of the department as a whole is extremely strong. There is a great culture of translational science and lots of phenomenal companies that have spun out of UoU Department of Biomedical Engineering (i.e. Blackrock, Ripple, BioFire, etc).”



“I ski almost as much as I study! The outdoors have become a major part of my life, and I am so grateful to live closer to mountains. Also, I am in an incredibly well funded, research focused lab.”



Join us for:

UBEC

The letters 'UBEC' are rendered in a large, bold, red font. The 'U' and 'B' are filled with white biomedical icons: a brain, a DNA double helix, a microscope, a heart, a hand, a biohazard symbol, and a pulse line. The 'E' and 'C' are solid red.

Utah Biomedical Engineering Conference

September 21, 2024

U of Utah Alumni House

- Build your network
- Share your research
- Get inspired
- Enjoy the environment

Learn more: ubec.bme.utah.edu

Thanks to our past sponsors!

Dean Brown's office, Erin Rothwell's office, Rachel Hess' office, Patrick Tresco, BME Department